
S60 Bluetooth Driver Installation Guide

Version 1.0
March 5th, 2007

S60 platform

Contents

1 Introduction.....	3
2 Installing the S60 Bluetooth Driver	4

1 Introduction

S60 Bluetooth driver for Windows XP enables Bluetooth communication from and to the SDK emulator.

SDK Compatibility

The driver can be used with any S60 3rd Edition SDK. However, enhanced support in emulator preferences has been introduced in S60 3rd Edition SDK for Symbian OS, Supporting Feature Pack 1. Thus, installing the driver to S60 3rd Edition SDK for Symbian OS and S60 3rd Edition SDK for Symbian OS, Maintenance Release requires a couple of additional installation steps.

Bluetooth connectivity with the S60 emulator has been tested with the following SDKs:

- S60 3rd Edition SDK for Symbian OS, Maintenance Release
- S60 3rd Edition SDK for Symbian OS, Supporting Feature Pack 1



Note: Bluetooth connectivity has also been successfully established with S60 3rd Edition SDK for Symbian OS, Supporting Feature Pack 2, but no comprehensive testing has been implemented.

The driver may also work with SDKs published prior to S60 3rd Edition, but this has not been thoroughly tested.

Bluetooth Hardware Compatibility

The S60 Bluetooth driver is compatible with many inexpensive Bluetooth dongles and thus does not require any specific Bluetooth hardware.

The driver has been verified to work with the following Bluetooth hardware:

- CE Bluetooth USB Adapter
- Belkin Bluetooth dongle
- D-Link Bluetooth Dongle.

2 Installing the S60 Bluetooth Driver

The Bluetooth driver is delivered with S60 3rd Edition SDK for Symbian OS, Supporting Feature Pack 2 and is located in <S60_SDK_installation_directory>\S60Tools\S60Bt.

The driver is also available as an independent delivery.

Prerequisites

- Windows XP
- S60 3rd Edition SDK installed to your PC (please refer to the *Installation Guide* of the SDK for detailed installation requirements)

Installation Steps

- 1 Open the Windows **Device Manager**.
- 2 In the **Device Manager**, locate the Bluetooth device to be used as the S60 Bluetooth device.

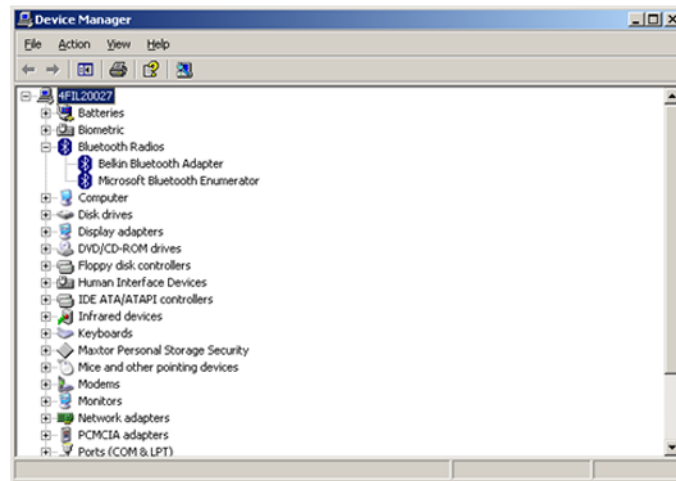


Figure 1: Bluetooth device in Device Manager

- 3 Click the right mouse button and select **Update Driver...** in the pop-up-menu.

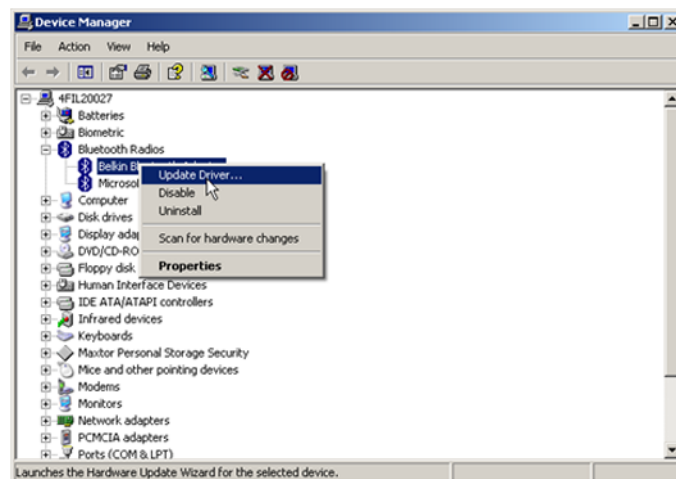


Figure 2: Update Driver... option in pop-up menu

- 4 Select **No, not this time**, if the **Hardware Update Wizard** displays the following dialog, and click **Next >**:



Figure 3: Hardware Update Wizard

- 5 Select **Install from a list or specific location** and click **Next >**:

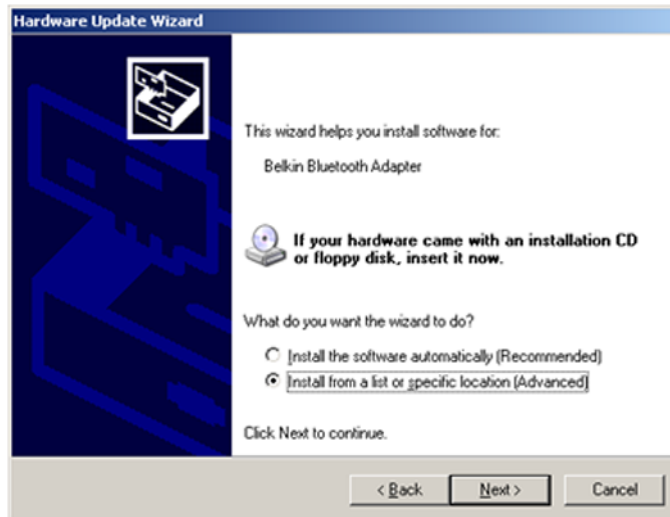


Figure 4: Install from a list or specific location (Advanced)

- 6 Select **Don't search. I will choose the driver to install.** and click **Next >**.

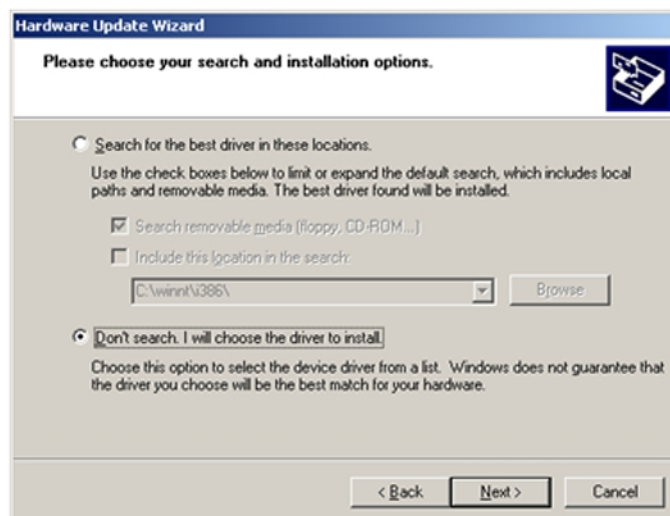


Figure 5: Don't search. I will choose the driver to install.

- 7 Select the device driver and click the **Have Disk...** button.

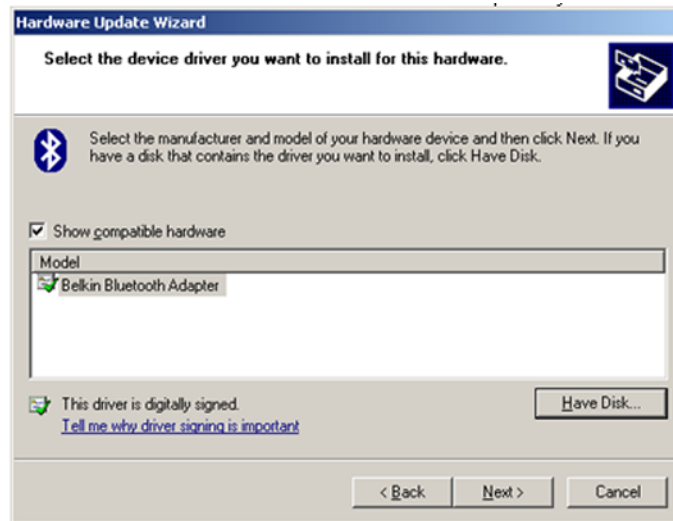


Figure 6: Select the device driver you want to install for this hardware

- 8 In the **Locate File** dialog, browse to `s60bt.inf` file and click **Next >**.

If you have installed the S60 SDK 3rd Edition FP2 in SDK, `s60bt.inf` is located in `<S60_SDK_installation_directory>\S60Tools\S60Bt`. Otherwise browse to the location to which you have extracted the driver files.

- 9 When a Hardware Installation warning appears, click **Continue Anyway**.



Figure 7: Hardware Installation warning

- 10 Once the installation has been completed, click **Finish**.

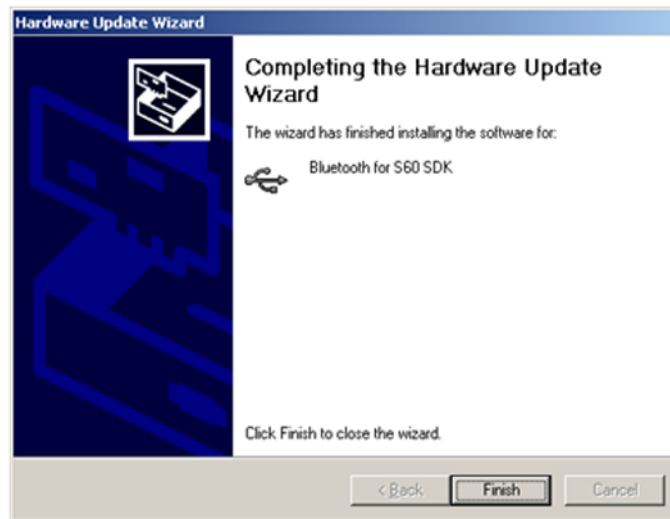


Figure 8: Installation completed

The **Device Manager** should now display **Bluetooth for S60 SDK** in the list of USB controllers:

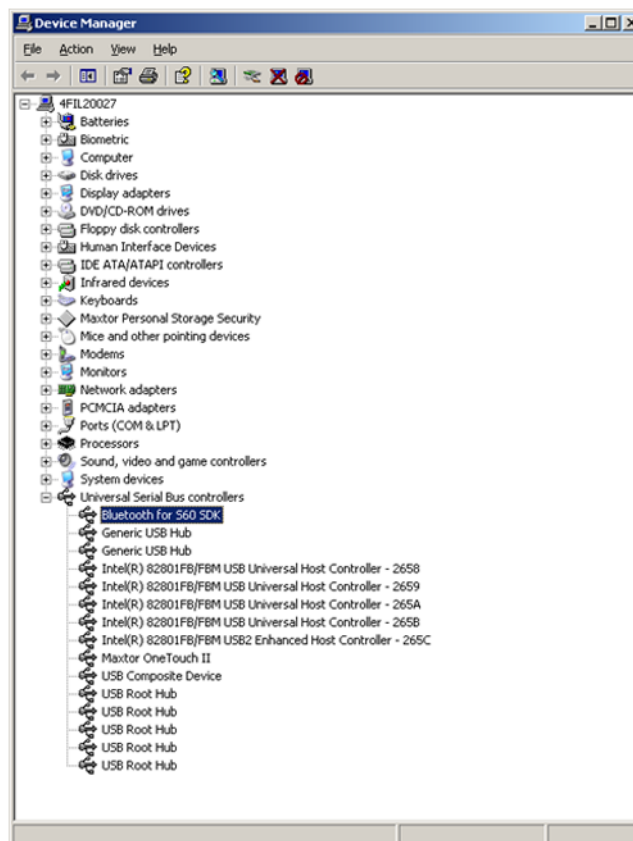


Figure 9: Bluetooth for S60 SDK USB controller in Device Manager

Configuring the emulator in S60 3rd Edition FP1 SDK or later

- 1 Perform steps 1-10 described in Installation Steps above.
- 2 Start the SDK emulator.
- 3 In the emulator, go to **Preferences > PAN (Personal Area Network)**.
- 4 In the **PAN (Personal Area Network)** tab,
 - enable Bluetooth
 - select **USB** in the **HCI** drop-down menu

- click **Apply**.

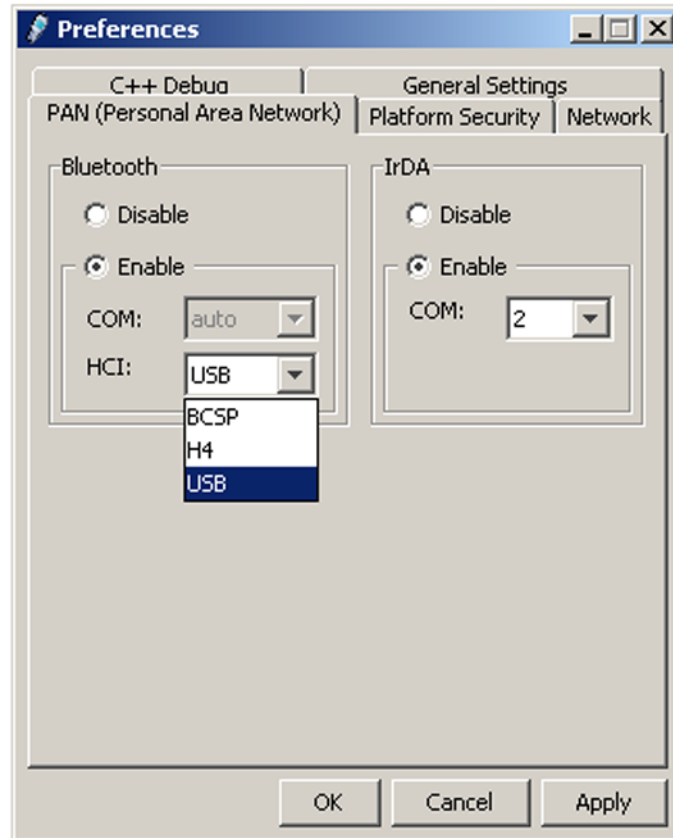


Figure 10: USB selected in PAN (Personal Area Network) tab

- Restart the emulator.

Bluetooth should now be operational in your emulator.

Configuring the emulator in S60 3rd Edition and S60 3rd Edition MR SDK

- Perform steps 1-10 described in Installation Steps above.
- Open the Command Prompt and enter the following command:

```
sbt.exe
```

sbt.exe is delivered in the same Zip archive as the Bluetooth driver. It prints out an available COM-port, for example:

```
C:\Symbian\9.1\S60_3rd_Final>sbt.exe
sbt: found 1 port
COM2: available
```

- Start the SDK emulator.
- In the emulator, go to **Preferences > PAN (Personal Area Network)**.
- In the PAN (Personal Area Network) tab,
 - enable Bluetooth
 - in the **COM** drop-down menu, select the COM port indicated by sbt.exe
 - select H4 in the **HCI** drop-down menu
 - click **Apply**.

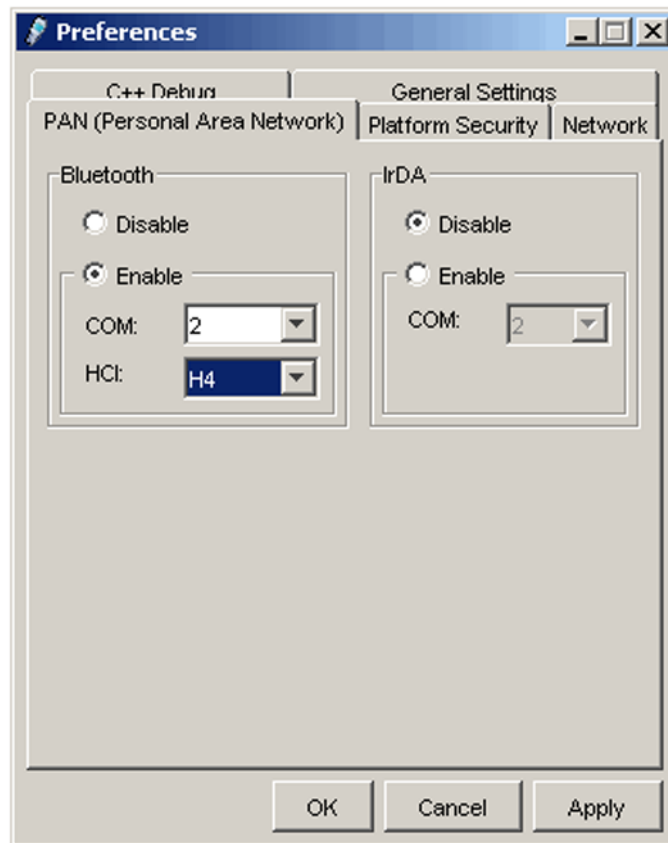


Figure 11: H4 selected in PAN (Personal Area Network) tab

6 Restart the emulator.

Bluetooth should now be operational in your emulator.